

MONTGOMERY COUNTY'S CREATIVE ECONOMY – A PROVEN RETURN ON INVESTMENT

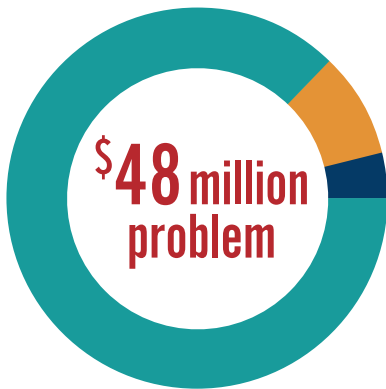
SUPPORT A VIBRANT LOCAL RECOVERY
AND WORKFORCE



MANDATED BUSINESS CLOSURES CAUSED SIGNIFICANT FINANCIAL HARM TO ARTS AND HUMANITIES BUSINESSES IN 2020

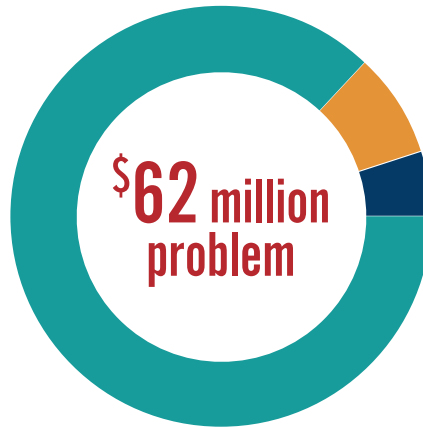
From March 2020 to December 2020 local business restrictions resulted in \$48 Million in lost revenue, increased debt, and reserve spending within Montgomery County's Arts and Humanities Sector. Projected losses increase to \$81 Million by June 30, 2021.*

Impact through Dec. 2020



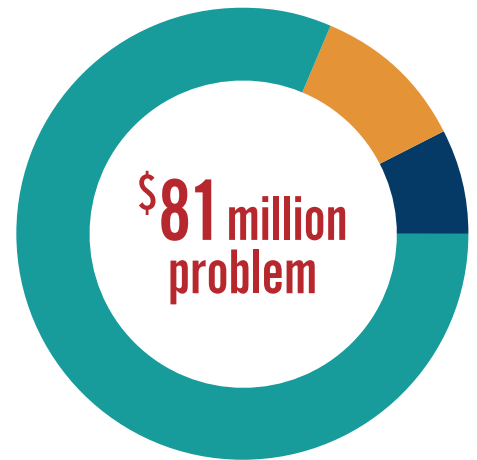
\$41 million Revenue Lost
\$5 million Debt Increased
\$2 million Reserve Used

Impact by April 2021



\$54 million Revenue Lost
\$5 million Debt Increased
\$3 million Reserve Used

Impact by July 2021



\$66 million Revenue Lost
\$9 million Debt Increased
\$6 million Reserve Used

*The Arts and Humanities Council of Montgomery County surveyed 95 Montgomery County-based cultural organizations in January 2021 concerning the financial impact of Covid-19 business restrictions between March 12, 2020 and Dec. 31, 2020, as well as the projected financial impact through June 30, 2021. Thirty (30%) of survey respondents project using reserve spending and sixty percent (60%) project financing their businesses through new debt and liabilities to continue operating by June 30, 2021. More information on this report and data can be found at: <http://bit.ly/AHCMC2020CovidImpactSurvey>



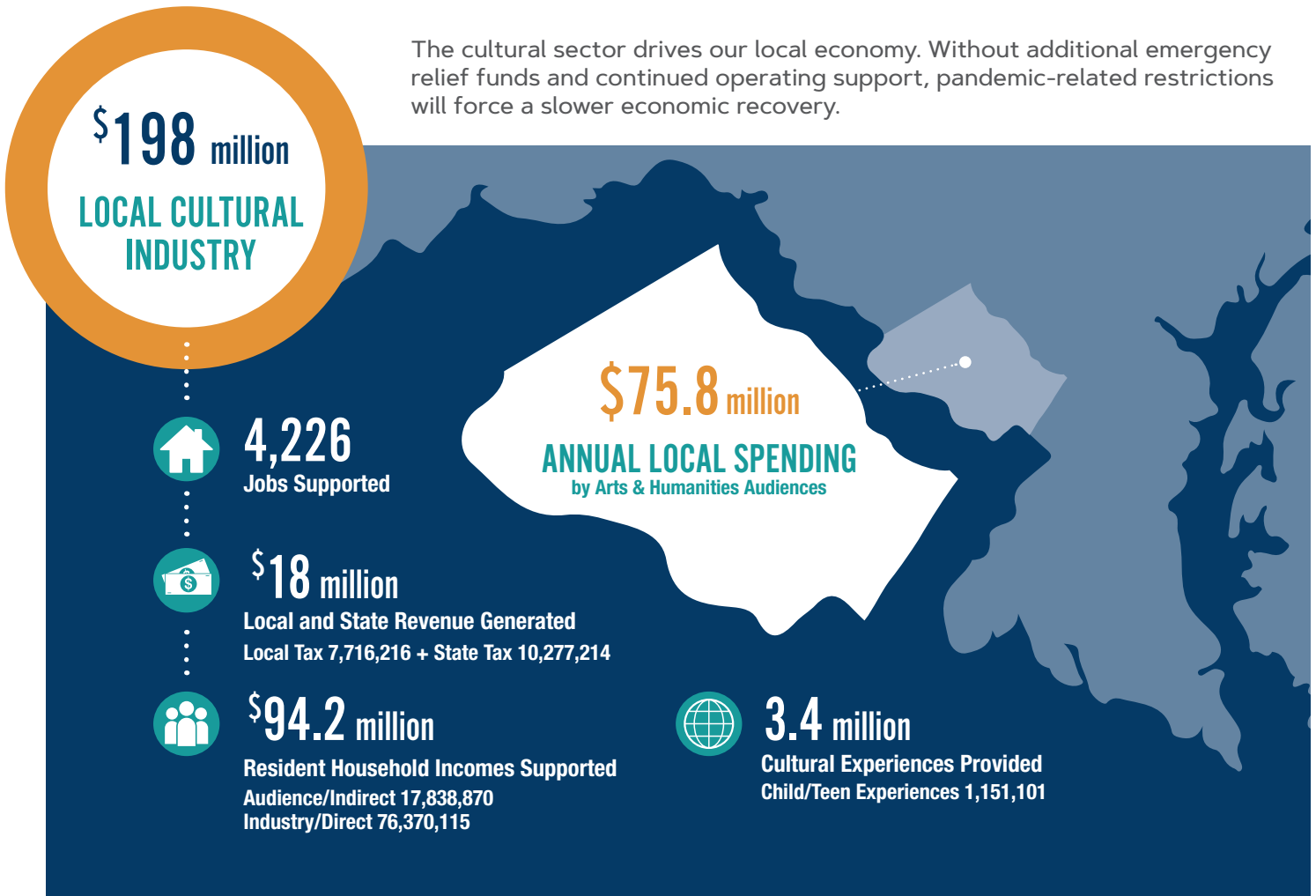
MONTGOMERY COUNTY **LOST A PROJECTED \$57 MILLION** IN ECONOMIC ACTIVITY AND LOCAL AUDIENCE SPENDING **FROM 9,000+ CANCELLED CULTURAL EVENTS IN 2020.**

*Audience attendance was projected at 75% of FY 2019 accounting for April 1, 2020 through December 31, 2020. Economic impact of audiences was projected using Americans for the Arts' Arts and Economic Prosperity 5 study. Number of cancelled and postponed events taken from 2020 Covid-19 Financial Impact Study.

AN INVESTMENT IN THE ARTS AND HUMANITIES IS AN INVESTMENT IN OUR LOCAL RECOVERY

MONTGOMERY COUNTY'S CULTURAL SECTOR GENERATED \$198 MILLION IN ECONOMIC ACTIVITY IN 2019.

The cultural sector drives our local economy. Without additional emergency relief funds and continued operating support, pandemic-related restrictions will force a slower economic recovery.



arts & humanities
council of montgomery county

THE HEALTH OF THE CREATIVE INDUSTRIES ARE IMPERATIVE TO A SUCCESSFUL LOCAL RECOVERY, VIBRANT WORK FORCE AND DIVERSE LOCAL BUSINESS SECTOR.

***About the Data** – Data for this report was provided by grantees and Covid-19 Relief Fund recipients of the Arts and Humanities Council of Montgomery County from the FY 2020 and FY 2021 grants cycles as well as the Arts and Economic Prosperity 5 study, a project of Americans for the Arts. The Arts and Economic Prosperity 5 report for Montgomery County can be found at: <https://www.creativemoco.com/our-role/impact/impact/aep-5/>. The 2020 Financial Impact Survey results can be found at: <http://bit.ly/AHCMC2020CovidImpactSurvey>. For more information regarding AHCMC grantmaking, please visit: <https://www.creativemoco.com/find-opportunities/grants/>.

FY21 GRANTEES

General Operating Support II

ArtStream, Inc.	Friends of the Library	Metropolitan Ballet Theatre, Inc.	The Metropolitan Center for
Adventure Theatre Inc.	Montgomery County, Inc.	Montgomery Community Media	the Visual Arts, Inc. (VisArts)
Artivate, Inc.	Glen Echo Park Partnership for	Montgomery History	The Puppet Co.
Baltimore Symphony Orchestra Inc.	Arts and Culture, Inc.	National Philharmonic	The Writer's Center
Bender JCC of Greater Washington	Imagination Stage, Inc.	Olney Theatre Center	Washington Conservatory of Music
BlackRock Center for the Arts	KID Museum, Inc.	Round House Theatre, Inc.	Washington Revels, Inc.
CityDance Ensemble, Inc.	Levine Music, Inc.	Sandy Spring Museum, Inc.	
	Maryland Youth Ballet, Inc.	Strathmore Hall Foundation Inc.	

General Operating Support I

After School Dance Fund Inc	Dance Exchange Inc.	Kalanidhi Dance	Project Change (now through
Akhmedova Ballet Foundation, Inc.	Docs in Progress Inc.	Kentlands Community Foundation Inc.	So What Else)
Arts for the Aging, Inc.	Flying V Ltd.	Lumina Studio Theatre	Silver Spring Town Center Inc.
Arts on the Block	GB Youth Media	Marlow Guitar International	Story Tapestries, Inc.
Bel Cantanti Opera	Glen Echo Pottery	Incorporated	Symphony of the Potomac Inc.
Cantate Chamber Singers Inc.	Glorystar Children's Chorus	National Capital Trolley Museum	Victorian Lyric Opera Company
Carpe Diem Arts Inc.	Inscape Chamber Orchestra	New Orchestra of Washington Inc.	Young Artists of America at
Chevy Chase Historical Society Ltd.	InterAct Story Theatre Education	Peerless Rockville Historic	Strathmore
ClancyWorks Dance Company,	Association Inc.	Preservation Ltd.	Youth Art For Healing Inc.
CREATE Arts Center Inc.	interPLAY Orchestra Inc.	Photoworks Inc.	Zemer Chai

Program & Capacity Building Project Grants

F. Scott Fitzgerald Literary	DC South Asian Arts Council Inc.	NIH Community Orchestra	Tagore Music Group of
Conference Inc.	FocusMusic	NIH Philharmonia	Greater Washington DC
AmaZing Theatre Company	Four Seasons Dancers Inc.	Orfeia Vocal Ensemble	Takoma Park Folk Festival Inc.
Best Medicine Rep Inc.	Harmony Express	Peace Mountain Theatre Company	Trinity Chamber Orchestra Inc.
Bethesda Blues & Jazz Foundation, Inc.	Kolot Halev	Peter's Alley Inc.	Unexpected Stage Company
Bethesda Little Theatre	Montgomery Philharmonic, Inc.	Rockville Brass Band Inc.	Washington Metropolitan Gamer
ChorSymphonica	Montgomery Symphony Orchestra Inc.	Six Degree Singers Inc.	Symphony Orchestra
Damascus Theatre Company Inc.	National String Symphonia		Wildwood Summer Theatre

Arts Residencies in Schools Grants

Leila Cabib – Glenallan Elementary	Steven Lawrence Barker –	Valerie Baugh-Schlossberg –	Adrienne Clancy – Albert Einstein
School	A. Mario Loiderman Middle School &	Stedwick Elementary School &	High School & A. Mario
Arianna Ross – Dr. Charles R. Drew	Seneca Valley High School	Galway Elementary School	Loiderman Middle School
Elementary School & JoAnn Leleck			
Elementary School			

Wheaton Cultural Project Grants

InterAct Story Theatre Education	Brian Frankel	Leila Cabib	Urban Artistry, Inc.
Association, Inc.	ChorSymphonica	Mayur Dance Company	Wheaton Wonders, Inc.
AmaZing Theatre Company	DC South Asian Arts Council, Inc.	New Orchestra of Washington, Inc.	
Antoinette Togba-Mensah	Dominick Rabrun	The Civic Circle	

Artists & Scholars Project Grants

Lynn Margaret Alleva	Alyscia Cunningham	Sarah Frisof	Frank Martin	Beverly Ress	Barbara Siegal
Damon Arhos	Susan Donnelly	Fleur Gedamke	Suneeta Misra	Seema Reza	Elzbieta Sikorska-Pettit
Sarah Avery	Pam Eichner	Susan Goldman	Adrienne Moumin	Bonnie Rich	Carol Solomon
Sophia Belkin	Jeremy Eig	Anthony Harvey	Danielle Mysliwiec	Erin Roberts	Hillary Steel
Liliane Blom	Melissa Ezelle	Muriel Hasbun	Cory Oberndorfer	Ana Cecilia Rocha	Paula Stone
Jack Boul	Francisco Javier Farias	Jacqueline Hoysted	Dominick Rabrun	Derek Ross	John Weber
Adrienne Clancy	Amy Finkelstein	Megan Maher	Deepak Ram	Robyn Shrater Seemann	

ABOUT

The Arts and Humanities Council of Montgomery County (AHCMC) was established in 1976. As Montgomery County's designated local arts agency, we provide leadership and support services that sustain cultural organizations, artist and scholars and inspire participation in our County's rich cultural assets.



801 Ellsworth Drive, Silver Spring, MD 20910
301.565.3805 • www.creativemoco.com

[facebook.com/creativemoco](https://www.facebook.com/creativemoco) [@creativemoco](https://twitter.com/creativemoco)