



AN IMMERSIVE  
ONLINE EXPERIENCE!

# SPY ACADEMY

THE LOST  
TREASURE OF ATLANTIS!



# Spy Academy

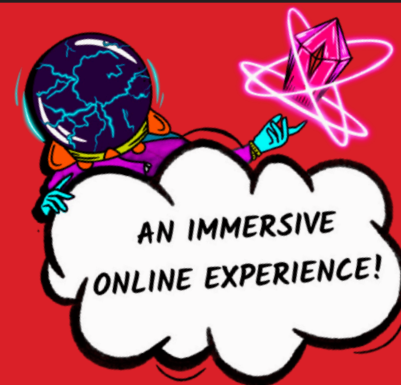
## & the Lost Treasure of Atlantis

February 13 - May 23, 2021

Conceived and Co-Directed by Strother Gaines

Written by Doug Robinson

Produced and Co-Directed by Jeffrey Eagle



### FEATURING:



### Featuring:

Edima Essien, Danielle Gallo,  
Amanda Haddock, Jasmine  
Jones, Miss Kitty, Matthew  
Pauli, Ryan Sellers

### CALLING ALL SPY CADETS:

**Spy Team 7 is on a mission to recover a powerful treasure from the evil Dr. Levinious, but we've lost contact. Only YOU can help us now. Please sign up and help us save the world!**

Full of surprises, fun, and memorable characters, each performance of *Spy Academy* takes a small number of families through a series of puzzles, codes, and challenges on a quest to recover the stolen **Heart of the Dragon**. Part online escape room, part interactive game, this creative and immersive theatrical experience is a live virtual event perfect for ages 5+.

[imaginationstage.org](https://imaginationstage.org) | 301-280-1660

### Buy Now and Save!

Save \$10 on tickets purchased by  
February 19, for performances  
through March 14.

Use promo code **PC10**

Imagination Stage  
4908 Auburn Avenue  
Bethesda, MD 20814



Non-Profit Org.  
US Postage  
PAID  
Bethesda, MD  
Permit No. 162





Imagination Stage  
4908 Auburn Avenue  
Bethesda, MD 20814  
T 301-961-6060  
F 301-718-9526  
[www.imaginationstage.org](http://www.imaginationstage.org)

## Parent feedback about Imagination Stage virtual classes and faculty (January, 2021)

### **Marcia Howard**

*"Marcia is one of the best dance teachers she's ever had. She is creative, imaginative, and inspires her (her daughter) to want to keep dancing even when she's not in class. I was not sure how the dance classes would translate in digital but it is almost as if being virtual has given her a boost of confidence to be even more expressive and outgoing in her class and Marcia has really helped to boost that in her."*

### **Scott Turner**

*"Mr. Turner's patience, and skill doing virtual classes (and in person) have given her son a great outlet during the pandemic and ensure that he's making much needed regular connection. She also noted that her son asks about you all the time and was unhappy that you went on vacation at one point."*

### **Claire Bancroft**

*"My daughter absolutely loves Miss Claire- she is so nice and bubbly, and she (her daughter) looks forward to seeing her every week and is always talking about what she learned in Miss Claire's class. I have eavesdropped on a few classes and I think she does a fantastic job of engaging the kids and making sure everyone gets a turn and that the kids are enjoying themselves."*

### **David Whitney & The Facilities Crew**

*"Your (Imagination Stage) facilities are always immaculate. Every time we walk in, I am impressed with how clean the building is- it is always beautifully presented. Knowing how much care you take cleaning it when we aren't in Covid-times, gives me confidence to send him (my son) to Camp because I have no question that now the facility will be even cleaner."*

### **Danielle Mathers**

*"This morning I spoke with a parent who had glowing, and I mean GLOWING, things to say about Commercial Creators. She complimented us for creating camps that really fit the new medium (Zoom) and really making the best of that. She said her child was so excited, so engaged, and that it was one of the best things he did all summer- that he still talks about it. He loved his time in the camp and is hoping that we will have an advanced level coming out this summer."*

*She said, "Watching him run around the house to gather 'just the right props' for his commercial, was the most excited I saw him all summer and the creativity was off the charts."*



# THE SNOW QUEEN

December 7, 2020 - February 28, 2021

Written by Mike Kenny

Adapted from the story by Hans Christian Andersen

Directed by Janet Stanford



# The Snow Queen

## An At-Home Theatre Experience

December 7, 2020 - February 28, 2021

**This winter, Imagination Stage presents a new kind of theatre experience designed expressly for the current moment.**

*The Snow Queen* is a two-part at-home theatrical event – a live interactive prequel performance presented via Zoom and a full-length recorded performance of the play. Presented just in time for the festive season, *The Snow Queen* allows your family to continue the holiday tradition of live theater in a COVID-safe way.

**Learn more and book now at [imaginationstage.org](https://imaginationstage.org)**

### FEATURING:



From left to right:

Linda Bard (Gerda), Jasmine Joy Brooks (Angorra)  
Charles Franklin IV (Kai), and Drake Leach (Kragen)

[imaginationstage.org](https://imaginationstage.org) | 301-280-1660

In this adaptation of Hans Christian Andersen's famous winter fairy tale, a powerful friendship is put to the test as four narrators bring to life the story of Gerda and Kai, life-long best friends whose relationship is broken by the unfeeling Snow Queen.

Can Gerda save Kai before his heart is frozen solid?

## Bring The Snow Queen to Your School!

A Virtual Field Trip with Imagination Stage allows students to experience the joy of live theatre safely from their socially distant classrooms or homes.

To book a field trip workshop, please contact:  
[fieldtrips@imaginationstage.org](mailto:fieldtrips@imaginationstage.org)

### BUY NOW AND SAVE:

**\$20 per household pass**

(originally \$29 per household)

Use the Code **SQPOST** at Checkout\*

\*Offer not valid on past purchases and cannot be combined with other offers or discounts

Best for Ages 5+ | [#IStageSnowQueen](https://twitter.com/IStageSnowQueen)

Imagination Stage  
4908 Auburn Avenue  
Bethesda, MD 20814



Non-Profit Org.  
US Postage  
PAID  
Bethesda, MD  
Permit No. 162

## Review:

# *The Snow Queen* from Imagination Stage

December 23, 2020 by Jeffrey Walker

Aimed at young audiences, but appropriate for children of all ages, *The Snow Queen* is a magical first for Imagination Stage – the theatre’s first foray into online production. Billed as an “at-home theatre experience,” *The Snow Queen* offers a rich and engaging tale, told by four energetic actors, who breathe life into this Han Christian Andersen classic.

The entire family will want to gather round the computer screen or smart TV for this experience. I kind of wish I had younger kids at home so I could watch it again with them, but as a gentleman who has seen 50, I still found myself on the edge of my seat.

*The Snow Queen* experience is really twofold. In addition to the professionally recorded performance from their stage, there is also a live, pre-performance Zoom encounter in which families can participate. Twelve families are allowed entry into Zoom for each performance to interact with cast members and set the stage for the play performance. For a preview of the “live” Zoom experience, click [here](#).



(l-r) Linda Bard as Gerda, Charles Franklin IV as Kai, Drake Leach as Kragen, Jasmine Joy Brooks as Angorra in *The Snow Queen* from Imagination Stage (Photo: Noe Todorovich)



Adapter Mike Kenny has fashioned a wholly accessible version of Hans Christian Andersen's tale, structured into smaller stories, like the original. In Kenny's script, under the direction of Jane Stanford, four actors engage fully in the storytelling aspects of the presentation.

Not to be confused with Disney's *Frozen* (which is only inspired loosely by Andersen's tale), *The Snow Queen* deserves to be revisited and this stage adaptation is as fine a place to start. Beginning with the story of an evil magician who conjures a magic mirror to show the world as an ugly place, the story also focuses on the lifelong friendship between Kai and Gerda. As children, their bond of friendship is clearly strong. Together they sing together the show's theme:

*"The roses die, they fade away  
They grow to life again  
Just plant a seed  
And all they need  
A little sun, a little rain  
To grow to life again."*

What would a fairy tale be without a test? The magician's magic mirror breaks into a million pieces and spreads all over the world. Two shards of glass end up in Kai's eye and his heart. These icy pieces of glassP harden him to his friend Gerda and he falls for the frozen charms of – you guessed it! – the Snow Queen. What follows is a tale with a hero's journey for Gerda, as she traverses the world in search of her best friend. Along the way, she encounters old ladies (all memorably played by Drake Leach), talking crows and reindeer, a princess, and a female bandit (vividly portrayed by Jasmin Joy Brooks), until Gerda arrives at the palace of the Snow Queen to see if she can melt the ice in Kai's frozen heart.

The ensemble is adept at physical comedy, each have expressive faces, and all stay completely connected to the nature of the story. Each embodies the wide-eyed innocence of young children while balancing the comic and dramatic aspects of the play adroitly. With the cast members' energies practically leaping through my laptop screen, I can easily imagine how well this play would fill up Imagination's stage.



The cast of *The Snow Queen* from Imagination Stage (Photo: Noe Todorovich)

As Gerda and Kai, Linda Bard and Charles Franklin IV are charming and completely believable as two innocents, hurt by the evil magic of the broken mirror and the Snow Queen's icy grip. Bard plays Gerda throughout the performance, while Franklin joins Leach and Brooks taking on various roles – animal and human – with just a change of hat or an accessory or two. Director Stanford keeps the action moving and the actors engaged with a variety of found objects and strange props that help to weave the imaginative adventures into theatre magic. Colorful lampshades help actors become a flower garden; ladders, rugs and linens help transport Gerda from her home to the northern wasteland and back again with just a suggestion.

I imagine grown-ups and the wisest of children will catch the true message bubbling under the surface of *The Snow Queen*. After all the adventures and encounters with strange people and creatures, a wise old crone, passes on to Gerda the most important message of all: She has a good and open heart, and that is all the power she needs to get her friend back. As I watched this scene, I paused the video briefly. I thought about the ugliness that seems to permeate the world right now. Oh that we can all embrace our goodness and stop the shards from entering our hearts and clouding our vision.

I commend Imagination Stage for bringing this newly minted fairy tale to life in this new manner. As much as I, like many of you, hope that theatres can get back to producing live, in-person theatre as soon as it is safe, Imagination Stage's online experience is one I will treasure.

***The Snow Queen*** by Mike Kenny. Adapted from the story by Hans Christian Andersen . Director: Janet Stanford . Featuring: Linda Bard, Charles Franklin IV, Jasmin Joy Brooks, and Drake Leach. Scenic Design: Ali Mark . Lighting Design: Max Doolittle, Douglas Del Pizzo . Costume Design: Alysha DeVries . Composer & Sound Design: Justin Schmitz . Stage Managers: Austin Collins, Kate Mozier . Produced by Imagination Stage . Reviewed by Jeff Walker.





Vimeo Link to *The Snow Queen* Workshop Promotional Video

Link: <https://vimeo.com/504826207/37e837afd7>

Running Time: 3:52

**vimeo**

