

FY18 Grantees

General Operating Support Large (Now GOS II)

Adventure Theatre-MTC	Glen Echo Park Partnership for Arts and Culture	Olney Theatre Center
Artivate	Imagination Stage	Round House Theatre
ArtStream	KID Museum	Sandy Spring Museum
Baltimore Symphony Orchestra	Levine Music	Strathmore
Bender JCC	Maryland Youth Ballet	the Puppet Co.
BlackRock Center for the Arts	Metropolitan Ballet Theater and Academy	The Writer's Center
CityDance	Montgomery Community Media	VisArts
Dance Exchange	Montgomery History	Washington Conservatory of Music
Friends of the Library Montgomery County	National Philharmonic	Washington Revels

General Operating Support Mid-size (Now GOS I)

After School Dance Fund	Gandhi Brigade Youth Media	Olney Children's Ballet Theatre
Akhmedova Ballet Theatre	Glen Echo Pottery	Peerless Rockville
Arts for the Aging	Glorystar Children's Chorus	Photoworks at Glen Echo
Arts on the Block	Highwood Theatre	Project Change
Bel Cantanti Opera	Inscape Chamber Orchestra	Silver Spring Town Center inc.
Cantate Chamber Singers	InterAct Story Theatre	Story Tapestries
Carpe Diem Arts	interPLAY Orchestra	Symphony of the Potomac
Chevy Chase Historical Society	Kalanidhi Dance	Victorian Lyric Opera
ClancyWorks Dance	Kentlands Community Foundation	Word Dance Theater
CREATE Arts Center	Lumina Studio Theatre	Young Artists of America
Docs in Progress	Marlow Guitar International	Youth Art of Healing
Flying V Theatre	National Capital Trolley Museum	Zemer Chai
Forum Theatre	New Orchestra of Washington	

Project Grants

ChorSymphonica	Montgomery Symphony Orchestra	The Bethesda Blues & Jazz Foundation
DC South Asian Arts Council Inc	Olney Concert Band	The National String Symphonia
F. Scott Fitzgerald Literary Conference, Inc.	Peace Mountain Theatre Company	Trinity Chamber Orchestra
FocusMusic	Peter's Alley Theatre Productions	Unexpected Stage Company
Halau Nohona Hawaii	Rockville Brass Band Inc.	Washington Metropolitan Gamer
Heralds of Hope Theater Company	Six Degree Singers	Symphony Orchestra
Hope Garden Children's Ballet Theatre	Tagore Music Group of Greater	Wildwood Summer Theatre
Montgomery Philharmonic, Inc	Washington DC, Inc	

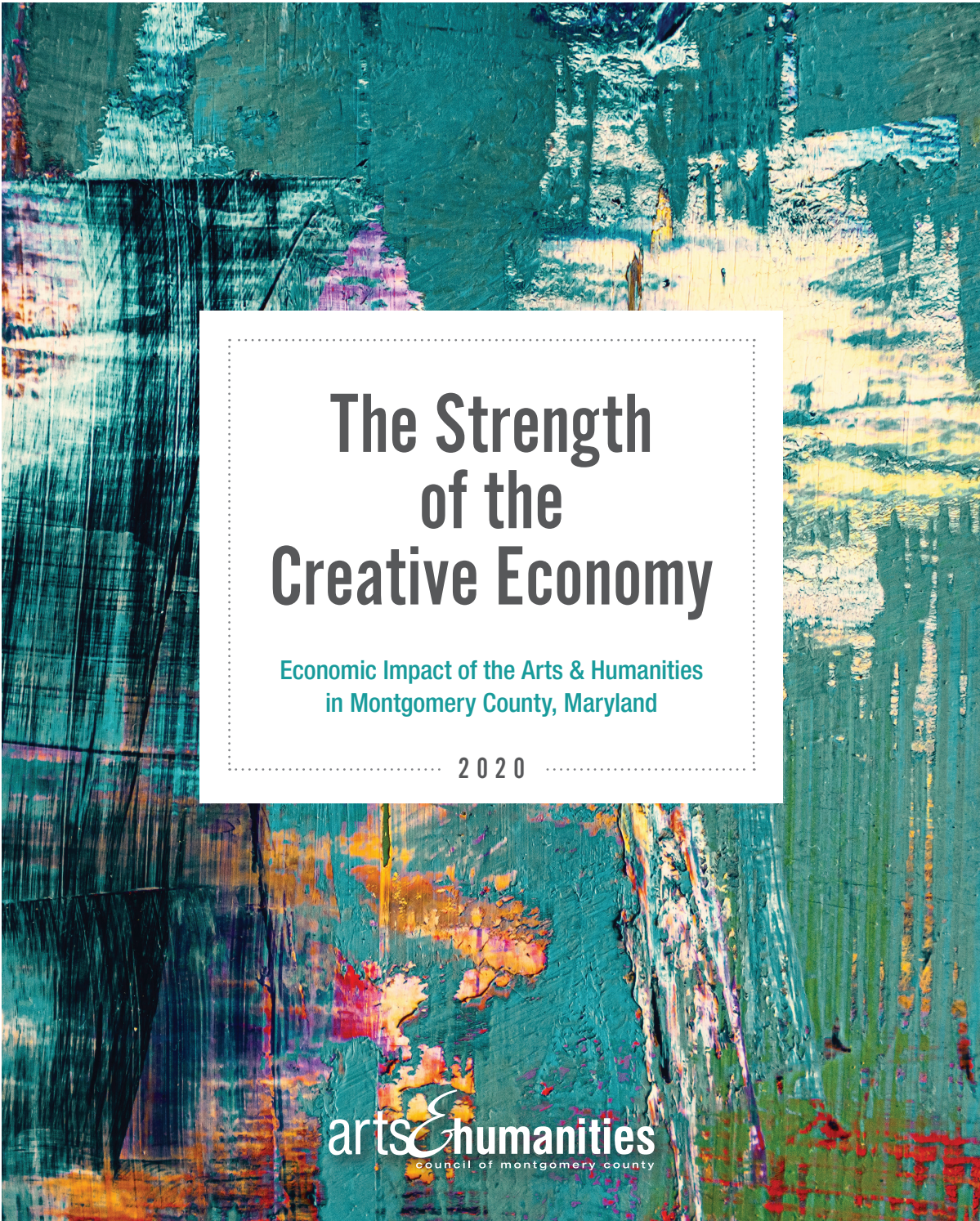
About

The Arts and Humanities Council of Montgomery County (AHC MC) was established in 1976. As Montgomery County's designated local arts agency, we provide leadership and support services that sustain cultural organizations, artist and scholars and inspire participation in our County's rich cultural assets.

*About the Data – The data used for this report was provided by grantees of the Arts and Humanities Council of Montgomery County from the FY18 grants cycle and the Arts and Economic Prosperity 5 study, a project of Americans for the Arts. To see the full Arts and Economic Prosperity 5 report for Montgomery County, please visit <https://www.creativemoco.com/our-role-impact/impact/aep-5/>. To learn more about our grantmaking, please visit <https://www.creativemoco.com/find-opportunities/grants/>. Dollar amounts may include, but are not limited to: direct funding, value of in-kind contributions, audience spending projections, and sponsorships.



801 Ellsworth Drive, Silver Spring, MD 20910
301.565.3805 • www.creativemoco.com
facebook.com/creativemoco @creativemoco

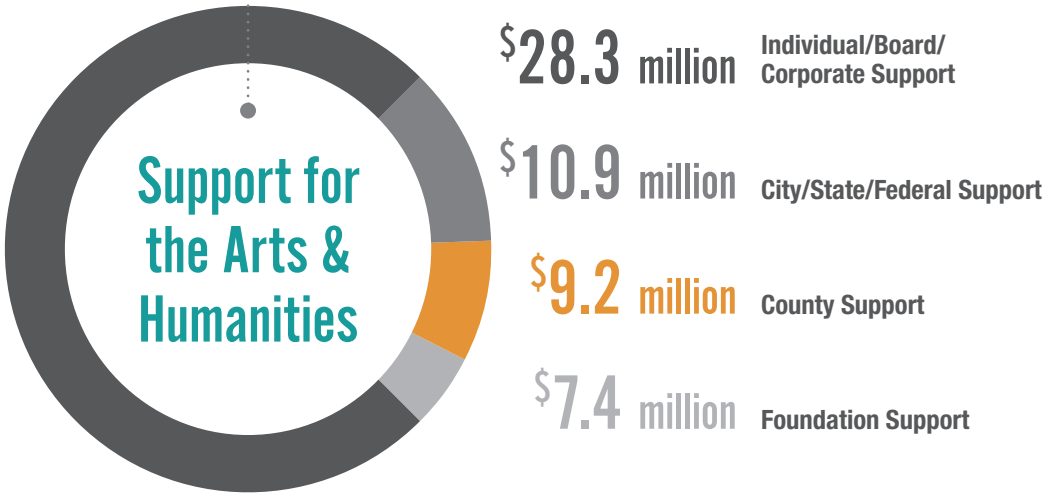


Impact

The Arts & Humanities Sector in Montgomery County:



Investment



The Arts & Humanities Boost the Local Economy

Average Montgomery County Cultural Event Attendee Spends

\$22.53	
Meals Before or After	\$12.47
Refreshments or Snacks	\$2.48
Transportation	\$2.53
Souvenirs & Gifts	\$2.25
Other	\$2.80

X

3.4 million Attendees



=

\$75.8 million
ANNUAL LOCAL SPENDING
by Arts & Humanities Audiences