

# FY19 Grantees

## Large Organizations

Adventure Theatre MTC	Glen Echo Park Partnership for Arts and Culture	Olney Theatre Center
Artivate	Imagination Stage	Round House Theatre
ArtStream, Inc.	Levine Music	Sandy Spring Museum
Baltimore Symphony Orchestra	Maryland Youth Ballet	Strathmore Hall Foundation, Inc.
Bender Jewish Community Center of Greater Washington	Metropolitan Ballet Theatre, Inc.	Metropolitan Center for the Visual Arts dba VisArts
CityDance	KID Museum	the Puppet Co.
Dance Exchange	Montgomery Community Television dba Montgomery Community Media	The Writer's Center
Friends of the Library, Montgomery County (FOLMC)	Montgomery County Historical Society	Washington Conservatory of Music
Germantown Cultural Arts Center dba BlackRock Center for the Arts	National Philharmonic Orchestra & Chorale of Montgomery County, Inc.	Washington Revels, Inc.
		Young Artists of America at Strathmore

## Mid-Size Organizations

After School Dance Fund	Gandhi Brigade	Marlow Guitar International Incorporated
Akhmedova Ballet Academy	Glen Echo Pottery (GEP)	New Orchestra of Washington
Artpreneurs Inc. dba Arts on the Block	Glorystar Music Education and Cultural Foundation, Inc. dba Glorystar Children's Chorus	Peerless Rockville Historic Preservation, Ltd.
Arts for the Aging, Inc. (AFTA)	Inscape Chamber Orchestra	Photoworks at Glen Echo Park
Bel Cantanti Opera	InterAct Story Theatre	Project Change (Team of Stars Program)
Cantate Chamber Singers	interPLAY Orchestra	Silver Spring Town Center Inc.
ClancyWorks Dance Company	Kalanidhi Dance	Story Tapestries, Inc.
CREATE Arts Center Inc.	Lumina Studio Theatre, Inc.	Symphony of the Potomac
Docs In Progress		The Highwood Theatre Inc.
Flying V, Ltd.		Youth Art for Healing

## Small Organizations

Bethesda Little Theater	Kolot HaLev	Rockville Brass Band
DC Beauty of Beijing Opera Ltd	Montgomery Philharmonic, Inc.	Six Degree Singers
F. Scott Fitzgerald Literary Conference, Inc.	National String Symphonia	Unexpected Stage Company
FocusMusic	Neighborhood Concerts	Wheaton Wonders dba Wheaton Arts Parade
Heralds of Hope Theater	NIH Philharmonic	Wildwood Summer Theatre
Hope Garden Children's Ballet Theatre	Rockville Bach Academy, Inc. dba The Advent Project	Zemer Chai
Jazz Encounters		

## About

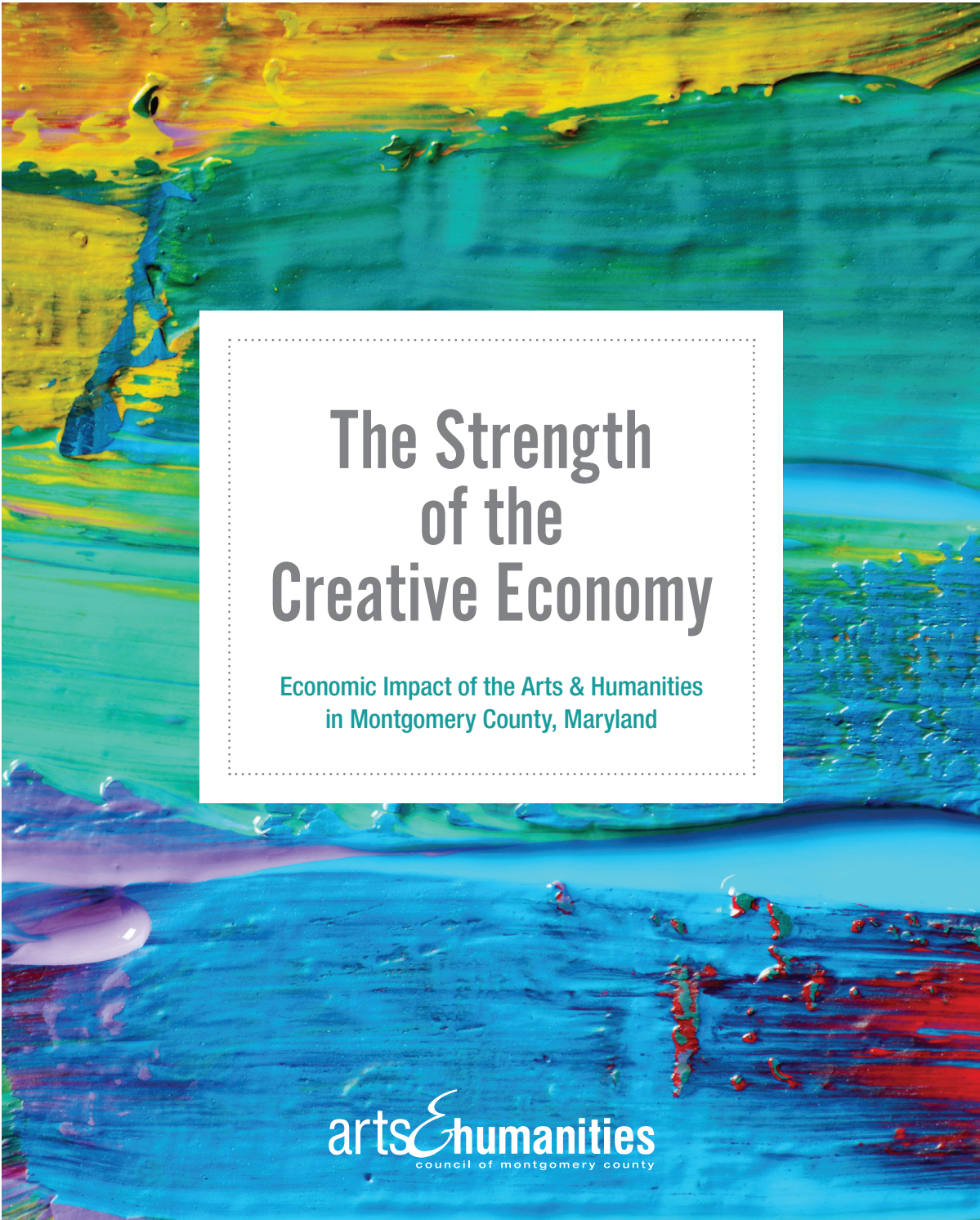
The Arts and Humanities Council of Montgomery County (AHCMC) was established in 1976. As Montgomery County's designated local arts agency, we provide leadership and support services that sustain cultural organizations, artist and scholars and inspire participation in our County's rich cultural assets.



801 Ellsworth Drive, Silver Spring, MD 20910  
301.565.3805 • [www.creativemoco.com](http://www.creativemoco.com)

[facebook.com/creativemoco](https://facebook.com/creativemoco) [@creativemoco](https://twitter.com/creativemoco)

\*About the Data – The data used for this report was provided by DataArts and The Cultural Data Profile, and the Arts and Economic Prosperity 5 study, a project of Americans for the Arts. For more information on the Cultural Data Profile, please visit [www.culturaldata.org](http://www.culturaldata.org). To see the full Arts and Economic Prosperity 5 study for Montgomery County Maryland, please visit [www.creativemoco.com/AEP5](http://www.creativemoco.com/AEP5). Dollar amounts may include, but are not limited to: direct funding, value of in-kind contributions, and sponsorships.



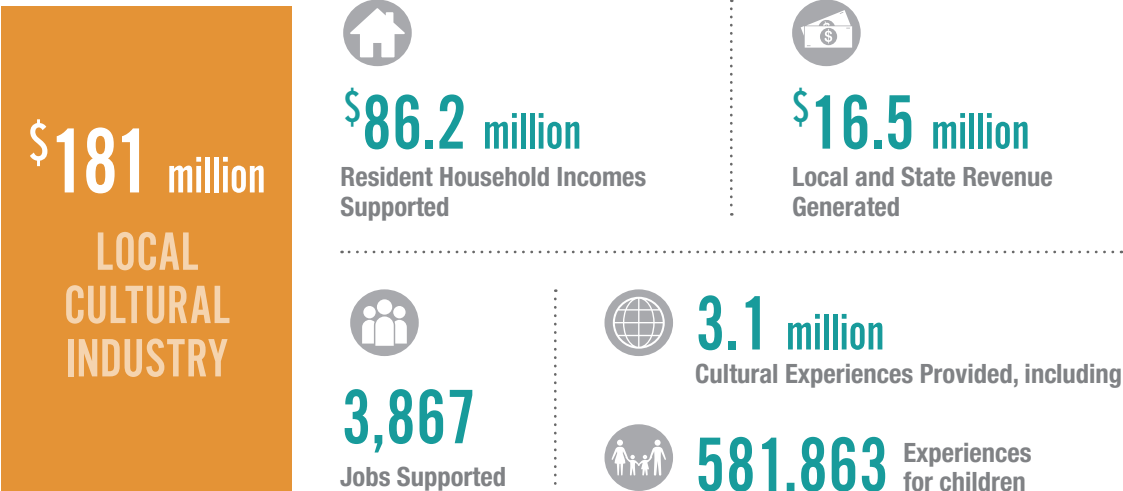
# The Strength of the Creative Economy

Economic Impact of the Arts & Humanities  
in Montgomery County, Maryland



# Impact

The Arts & Humanities Sector in Montgomery County:



# Investment



## The Arts & Humanities Boost the Local Economy

Average Montgomery County Cultural Event Attendee Spends

	<b>\$22.53</b>
Meals Before or After	\$12.47
Refreshments or Snacks	\$2.48
Transportation	\$2.53
Souvenirs & Gifts	\$2.25
Other	\$2.80

**×** **3.1 million** Attendees



**=**

